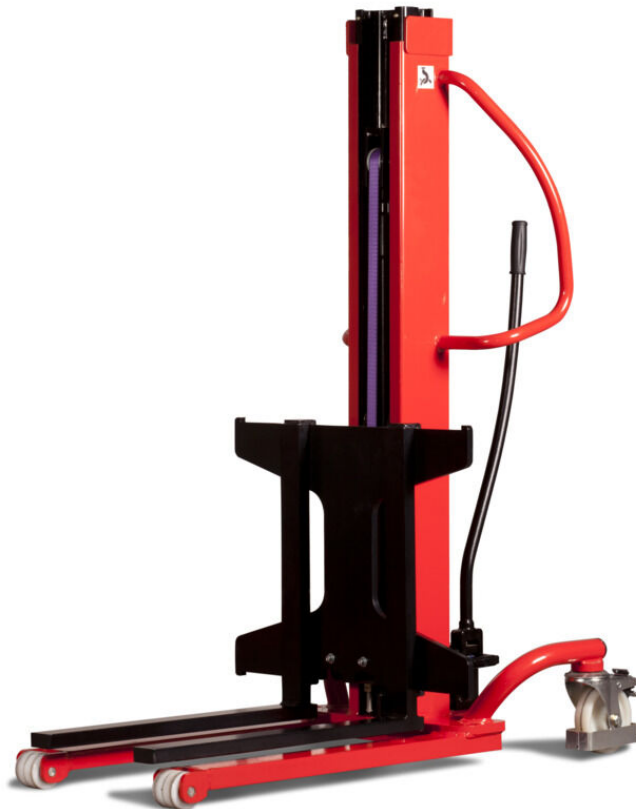


Technical sheet :

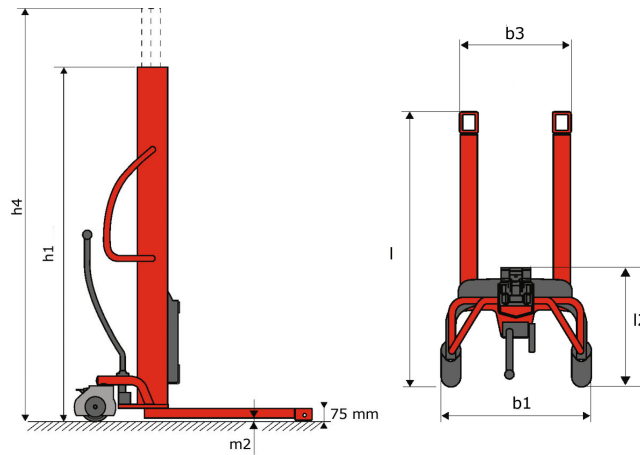
# **KLEOS HM 250 D25**

---



	Technical characteristics		Metric
1.1	Manufacturer		Manitou
1.2	Model Name		HM 250 D25
1.3	Power source		Manual
1.4	Operator type		Pedestrian
1.5	Max. capacity	Q	250 kg
	<b>Weight</b>		
2.1	Overall weight without tools		110 kg
	<b>Wheels</b>		
3.1	Tyres type		Nylon
3.2	Dimensions of front wheels		2x (75x65)
3.3	Dimensions of rear wheels		2x (150x50)
	<b>Dimensions</b>		
4.2	Height mast lowered *	h1	1815 mm
4.4	Max. lifting height	h3	2480 mm
4.5	Height mast extended *	h4	3055 mm
4.19	Overall length without tools	l1	1032 mm
4.20	Length to face of forks	l2	571 mm
4.21	Overall width	b1	710 mm
4.25	Fork spread	b5	529 mm
4.32	Ground clearance at centre of wheelbase	m2	40 mm
	<b>Performances</b>		
5.2	Lifting speed (laden / unladen)		0.10 m/s / 0.10 m/s
5.3	Lowering speed (laden / unladen)		0.10 m/s / 0.10 m/s
5.11	Parking brake		Mecanic

# Kleos HM 250 D25 - Dimensional drawing

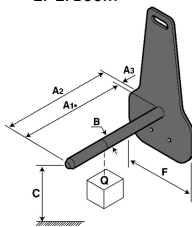


## Tool characteristics

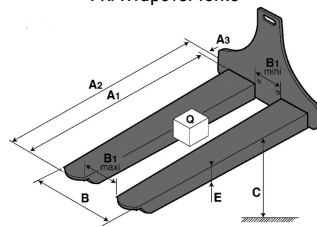
Tool 250 kg	Attachment capacity kg	Center of gravity of load	A1	A2	B	B1	C	D	E	E1	E2	F	Weight kg
			mm	mm	mm	mm	mm	mm	mm	mm	mm	mm	
EPE 250	250	-	500	515	40	-	270	-	-	-	-	320	21
FA 250	250	-	500	540	-	230	650	50	50	20	-	680	33
PLF 250	200	-	620	635	500	-	280	-	88	-	-	630	40
POT 250	150	-	425	440	50	-	170	-	-	-	-	320	22

## Tools

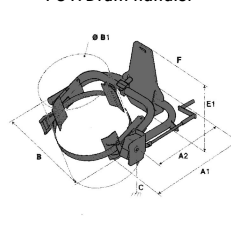
EPE: Boom



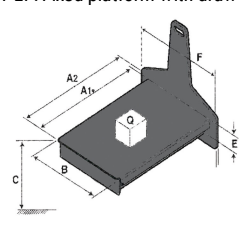
FR: Wrapover forks



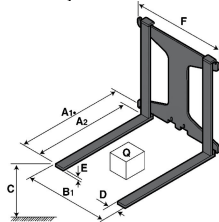
FUT: Drum handler



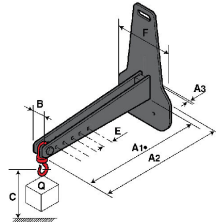
PLF: Fixed platform with drawer



FA: Adjustable forks



POT: Jib with hook





Siège Social

430 rue de l'Aubinière - 44150 Ancenis Cedex - France

Tel: +33(0)2 40 09 10 11 - Fax: +33 (0)2 40 09 10 97

[www.manitou.com](http://www.manitou.com)



This brochure describes versions and configuration options for Manitou products which may be fitted with different equipment. The equipment described in this brochure may be standard, optional or not available depending on version. Manitou reserves the right to change the specifications shown and described at any time and without prior warning. The manufacturer is not liable for the specifications given. For more information, contact your Manitou dealer. Non-contractual document. Product descriptions may differ from actual products. List of specifications is not comprehensive. The logos and visual identity of the company are the property of Manitou and may not be used without authorisation. All rights reserved. The photos and diagrams contained in this brochure are provided for information only.

MANITOU BF SA - Limited company with board of directors - Share capital: 39,668,399 euros - 857 802 508 RCS Nantes